



TECHNICAL DATA:

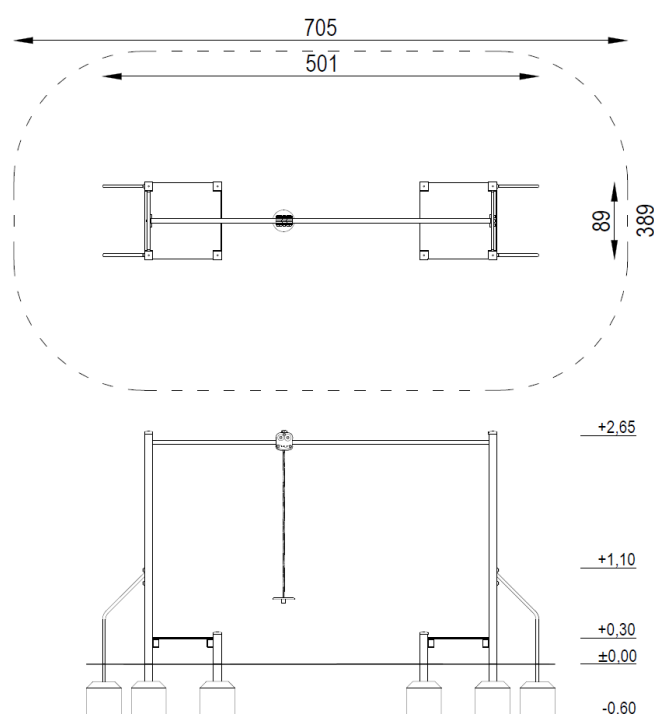
Easily accessible device,
according to standard EN 1176-1:2017

Device dimensions:	5,01 x 0,89m
Device height:	2,65m
Minimum space:	7,05 x 3,89m
Falling area:	25,45m ²
Critical fall height:	0,95m
Foundations depth:	-0,60m

The device according to EN 1176-1:2017
Playground equipment and surfacing – Part 1:
General safety requirements and test method.

Safety surfaces:
- turf / topsoil, sand, gravel, bark, synthetic surface
- minimal thickness for loose particulate materials 200+100mm
- synthetic surface according to critical fall height

Projection and device view



MATERIALS:

Construction poles:	steel square profiles, galvanized, powder coated in gray
Platforms:	waterproof plywood, with anti-slip layer, based on steel structure
Steel elements:	galvanized steel, powder coated
Seat:	made of rubber-coated metal construction, certified
Trolley:	construction made of stainless steel, polyurethane rollers * with ball bearings
Caps:	plastic
Foundations:	concrete min. C12/15 standard

* The rollers are a consumable item, which over time can wear out



SATERNUS DISTRIBUTION Sp. z o.o. sp.k.
ul. Nowa 32
41-500 Chorzów, Poland

Certificate beholder:
Producer:
Distributor:

GRUPA SATERNUS Sp. z o.o. S. K. A. reserves all rights to protect copyright under the Act of February 4, 1994 on Copyright and Related Rights (Journal of Laws No. 28, pc 83), and in particular Art. 78 and 79 of this Law.

GRUPA SATERNUS Sp. z o.o. S. K. A.
Saternus Production Sp. z o.o. sp. k.
Saternus Distribution Sp. z o.o. sp. k.