



1115MPN



Description

1 tall castle tower, 1 tower with envelope roof, 1 tower with gable roof, 1 tower with triangular roof, 2 square platforms, 1 long slide, 1 deep slide, 1 slide 104, 1 tunnel bridge, 1 ladder bridge, 1 tubular bridge, 1 spiral ladder, 1 arc ladder, 9 safety HDPE boards with decorative cuts, 2 walls with decorative cuts, 5 triangular landings, 3 square landings, 4 entrance, 6 climbing bars, 2 metal bars over the slide.

Model type

Modulair

Serial number

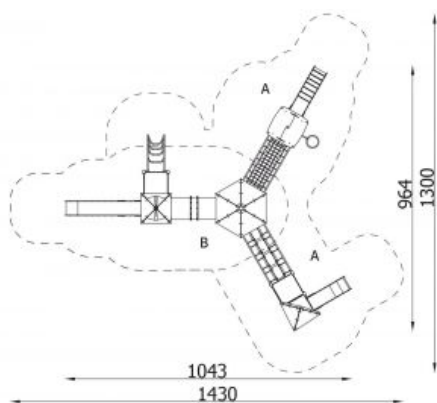
1115MPN

Equipment name

Castle Tower 15 1115

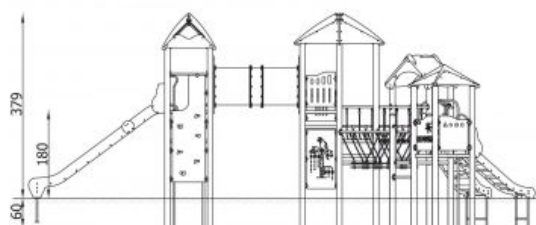
Join the action!

Castle Tower 15 1115



Product line	Action Orbis Metal Modulair
Age range	3 - 12
Unit measurements	964cm x 1043cm x 379cm
Required surface area	1300cm x 1430cm
Impact area	90.5m ²
Free height of fall	1.8cm
Material	<p>Bearing posts are made of round, steel pipes with a diameter of 114 cm, fixed direct in the ground. Antislip platforms.</p> <p>Roofs, security elements and panels are made of HDPE (high durable polyethylene) boards with pattern cuttings.</p> <p>Sliding surface is made of acid-proof, stainless steel sheet.</p> <p>Ropes made of polypropylene with a steel core, thickness 16-18 mm, vandalism and UV resistant.</p> <p>All fittings and connectors are weather and UV resistant.</p> <p>Steel elements are protected against corrosion by zinc layer and powder paint coating.</p>

Heaviest part	kg
Largest part	cm - cm
Spare parts	Available
Installation time without grondwork	5 hour(s) / 3 person(s)



Special tools	Included
Anchoring	<p>Poles are fixed in the ground at a depth of 60 cm on steel anchors. Concrete according to the assembly instructions.</p>

Remarks