



50105

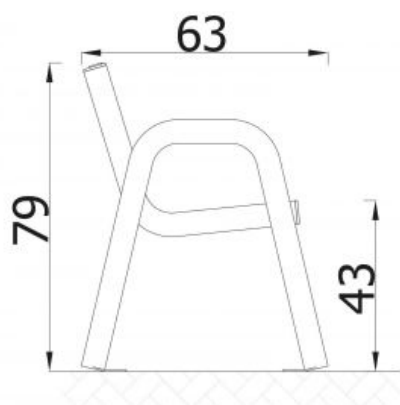
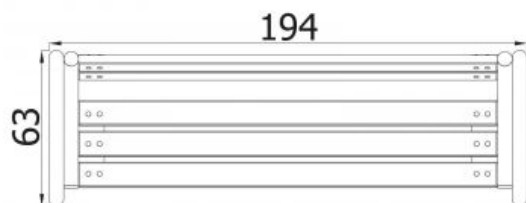


Description

A modern and universal city bench with a timeless design. A comfortable seat ensures a comfortable rest. Bench ideally suited to urban spaces, parks, squares and playgrounds, where it will serve for many years without losing anything of its attractiveness and functionality.

Model type	Solitair
Serial number	50105
Equipment name	Bench Spartan 50105

Join the action!



Product line	Action Park Furniture Solitair
Age range	0 - 99
Unit measurements	63cm x 194cm x 79cm
Required surface area	0cm x 0cm
Impact area	0m ²
Free height of fall	0cm
Material	Construction made of steel pipes and wooden boards. Wood elements are oiled or covered with a colour glaze. Steel elements are protected against corrosion by powder paint coating.
Heaviest part	kg
Largest part	20cm - 170cm
Spare parts	None
Installation time without grondwork	0 hour(s) / 0 person(s)
Special tools	None
Anchoring	The device without permanent foundation in the ground.
Remarks	